

♩ = 170

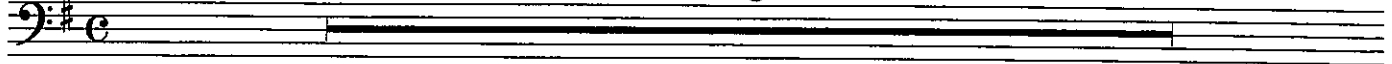
196. MESSIAH OVERTURE (excerpt)

Allegro moderato

8

George Frideric Hand

Double Bass



9 *f* I $\frac{1}{2}$ I IV

15 V III II $\frac{1}{2}$ III II $\frac{1}{2}$

23 I

27 $\frac{1}{2}$ I $\frac{1}{2}$

I II I

DOUBLE BASSES ONLY

Additional material from "Messiah Overture" for study and practice

Allegro moderato

f I II IV V

9 IV II $\frac{1}{2}$ I V V

15 II IV II I $\frac{1}{2}$ I

V

207. ÅSE'S DEATH (from PEER GYNT SUITE NO. 1 - excerpt)

Andante doloroso

Edvard Grieg

Double Bass

$\text{♩} = 60$

Measures 1-24 of the piece. The score is written for Double Basses. It begins with a tempo of *Andante doloroso* and a metronome marking of $\text{♩} = 60$. The key signature is two sharps (D major). The piece starts with a *p* dynamic. Measure 5 includes a *pp* dynamic and a *v* (accents) marking. Measure 9 has a *mf* dynamic. Measure 13 has a *p* dynamic. Measure 17 has a *p cresc.* dynamic. Measure 21 has a *ff* dynamic. Fingerings are indicated with numbers 1-4 and -4. Bowings are indicated with Roman numerals I, II, II½, and III. There are also markings for *fz* and *f*.

DOUBLE BASSES ONLY

Moderato from Antonin Dvorak's "Serenade For Strings", 1st Movement for study and practice

Moderato

pizz.

Measures 1-24 of the piece. The score is written for Double Basses. It begins with a tempo of *Moderato*. The key signature is two sharps (D major). The piece starts with a *p* dynamic. Measure 11 has a *dim.* dynamic. Measure 18 has a *f* dynamic. Measure 18 also has a *pp* dynamic. Measure 18 has a *pizz.* marking. Measure 18 has a *p* dynamic. Measure 18 has a *pizz.* marking. Measure 18 has a *arco* marking. Fingerings are indicated with numbers 1-4 and -4. Bowings are indicated with Roman numerals I, II, II½, and III. There are also markings for *fz* and *f*.